

**Jeep**<sup>®</sup>

16JWRIN09 (2000)

**WRANGLER**



**Jeep**<sup>®</sup>

**ADVENTURE.** *It manifests any number of ways. Wanderlust. A longing to learn. An appreciation for living in the moment with a simple curiosity for what lies beyond the next turn. Here's to making the most of the next 75 adventurous years.*

SINCE 1941



CELEBRATING

75  
YEARS

— of the —

GO ANYWHERE,  
DO ANYTHING<sup>®</sup>

SPIRIT





=====

THE HEART OF THIS HERO ASTOUNDS YOU.

*Born of a heroic past and driven to deliver your most memorable tomorrows, Jeep® Wrangler Unlimited stands ready to put you in touch with the real world.*

=====

=====

ENJOY  
FOUR-DOOR  
OPEN-AIR 4x4  
FREEDOM

=====

=====

LEGENDARY  
CAPABILITY AND  
GROUND CLEARANCE

=====

SEE LIFE MORE CLEARLY  
THROUGH A DUSTY LENS.

*Life looks pretty good through the  
windshield of a Wrangler Unlimited.  
Every mile rides easy. Every song on your  
playlist suits the scenery and raises the  
volume. You're connected to the world on  
multiple levels, until you decide not to be.*





# MARK OF MASTERY.

Every Jeep® Wrangler Unlimited bears a Road Rated® badge that announces its on- and off-road mastery. Rest assured your Trail Rated Wrangler Unlimited works hard to safely navigate through the most difficult challenges Mother Nature can set forth. Five Trail Rated test categories prove Wrangler Unlimited's fortitude.

## TRAIL RATED TEST CATEGORIES



GRIP

Trail Rated grip helps you maintain controlled forward motion. You can cross icy urban bridges, climb steep sand dunes and master muddy two-tracks. Others may fear untamed terrain, but your Trail Rated Wrangler Unlimited has the grip within to master all kinds of topography and driving conditions.



WATER FORDING<sup>1</sup>

Cross that stream with confidence, thanks to additional electrical and body seals, plus a high air-intake location. Wrangler Unlimited has the capability to safely manage in up to 508 mm of water.<sup>1</sup> Always inspect all waterways before proceeding, just to make sure there are no unforeseen pitfalls.



MANEUVERABILITY

Every Wrangler Unlimited is born with the athletic ability to navigate narrow gaps, handle emergency situations and avoid cosmetic damage to underbody sills thanks to precision steering, a tight turning radius, optimized wheelbases, and liberal approach, departure and breakover angles.



FLEXIBILITY

Wrangler Unlimited's suspension systems enhance on- and off-road performance by maximizing flexibility, axle flexibility and wheel suspension. This function indicates that when one or more wheels are elevated, the Jeep 4x4 system helps other wheels to stay on the ground longer to keep you moving.



GROUND CLEARANCE

Begin a journey knowing that your Road Rated Wrangler Unlimited has optimized approach, departure and breakover angles designed to clear logs, rocks and uneven ground. Your vehicle's undercarriage is protected, too, with forged skid plates that cover your vehicle's most valuable underbody component.



WIDE OPEN TO ALL POSSIBILITIES.



*FRESH.* When it comes to experiencing the outdoors, Wrangler gives you an experience like no other. Remove the boundaries between you and the world.

*FUN.* Make your own soundtrack for the trails, connect your MP3 player with the standard audio input jack and hear your tunes over the optional and outstanding Alpine® Premium Sound System with all-weather subwoofer.

*FIRST CLASS.* Carefree comfort rides along, from the Jeep® brand steering wheel with available controls for audio, speed, communications and Electronic Vehicle Information Center (EVIC), and on to the cushioned seating with optional heated front seats.

# THE ROAD IS WIDE OPEN.

.....  
*Here's your standing invitation to adventure.*

*You've got four doors  
to go all in with  
Wrangler Unlimited.*

*Cold weather does not affect those who  
go all in, with the right stuff, in a bold  
frame of mind. Wrangler Unlimited knows  
the way all year round. When you join this  
club, the benefits of membership are many.*







**COMMUNITY.** Wrangler Unlimited's Uconnect® system puts a range of available hands-free<sup>x</sup> tools, entertainment and navigation at your service. The standard audio input jack lets you connect compatible devices and stay in play.

**CLEAN.** Weather-resistant surfaces and an interior that can be washed out with a hose give you full permission to get out and have fun in the mud, snow and slush.

**COURAGEOUS.** Advanced multistage front air bags<sup>2</sup> provide nearly instantaneous occupant protection. Standard. Supplemental front seat-mounted air bags<sup>2</sup> deploy from the outboard side of each front seat. Standard.



CAMP CLIMB EXPLORE

MOUNTAIN  
OUTPOST

OUTPOST

OUTPOST

Jeep



*WRANGLER BRINGS A RANGE OF COMMUNICATION AND ENTERTAINMENT SERVICES STRAIGHT INTO YOUR VEHICLE, ALL BUNDLED TOGETHER WITHIN A ROBUST UCONNECT® SYSTEM — WITH MANY CONVENIENT AVAILABLE OPTIONS.*

***PHONE.** Plans can change along the way. Safely make calls with a hands-free phone call<sup>3</sup> Pair up to your Bluetooth®-enabled phone and voice commands<sup>3</sup> allow you to easily “call Judy” or “redial” as you keep both hands on the wheel. This clever system is also smart enough to synchronize with Bluetooth-compatible phones’ contacts – up to 1000 entries – every time you get into your vehicle.*

***NAVIGATION.** Go in the right direction with Uconnect® and its enhanced GPS wayfinding systems. The Uconnect 735N Media Center with enhanced GPS navigation<sup>3</sup> and destination entry via Voice Command<sup>3</sup> Find a local restaurant or attraction and get directions with a simple request.*

***VOICE COMMAND.**<sup>3</sup> It simplifies driving by letting you keep your eyes on the road and your hands on the wheel. Use your voice to select radio stations or make calls. You can also select navigation destinations.*

The right panel of the advertisement features a close-up, top-down view of a large stack of cut logs. The logs are arranged in a somewhat regular pattern, showing their circular cross-sections. The wood grain is clearly visible, and the colors range from light tan to dark brown, indicating different types of wood or stages of weathering. The stack is piled high, filling the entire right side of the image.

## THE GOODS

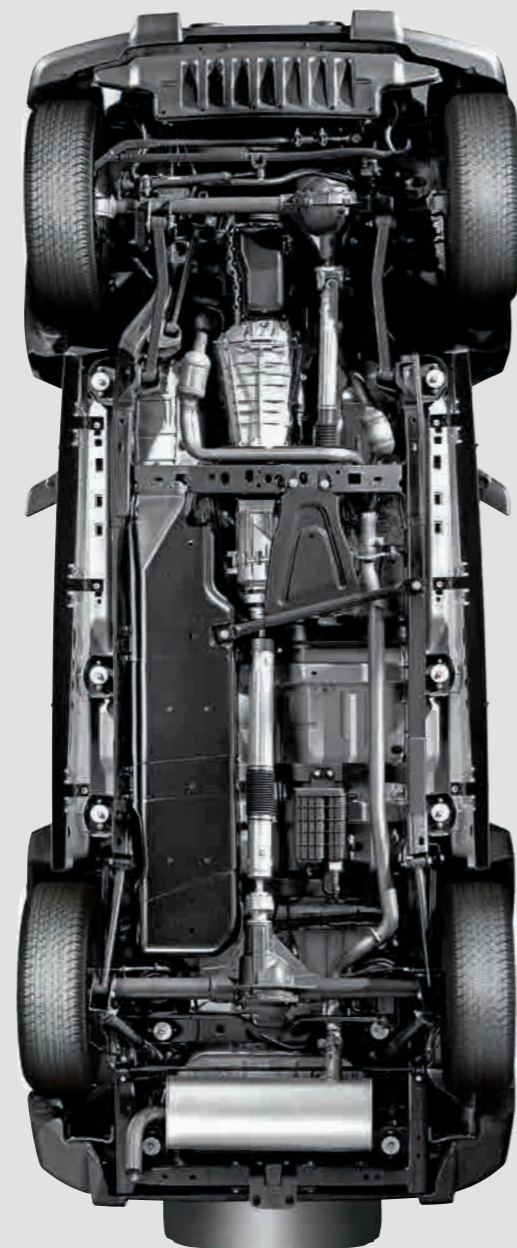
.....  
*Take a closer look at the features you'll love most.  
Discover what goes into making the Jeep®  
Wrangler Unlimited everything you need.*

DRIVE AHEAD WITH THE  
HEART OF A HERO.

**2.8 COMMON-RAIL TURBO DIESEL (CRD) ENGINE:** This diesel-powered engine for your Wrangler will be supported by 147 kW (200 ps) at 3600 rpm and 460 N•m (339 lb-ft) of torque at 1600 – 2000 rpm. Available.

**5-SPEED AUTOMATIC TRANSMISSION WITH AUTOSTICK:** Gain exceptional efficiency and out-of-the-starting performance. An aggressive first-gear ratio offers ample launch power without compromise. Electronically controlled engine torque helps you move smoothly through gear transition. The AutoStick feature offers driver-selectable control to manually change gears. Available.

**DANA® 44 HEAVY-DUTY SOLID AXLES:** Durability comes from heavy shafts, stiff housings, large pinion bearings and above-center pinion mountings for smoother, quieter operation. (Rear Dana 44 standard on Wrangler Unlimited.)



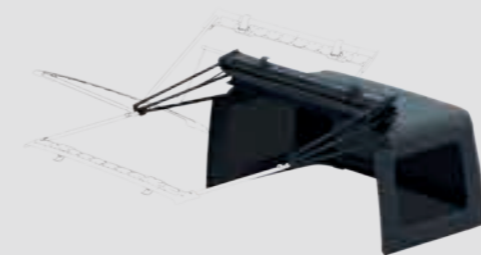
**TWO-PIECE STRUCTURAL OIL PAN:** A two-piece oil pan includes a steel lower portion for impact resistance and an upper aluminum section for improved weight savings.

**BODY-ON-FRAME DESIGN:** Built with a frame that's fully cased for strength, stiffness and durability.

**KEEP STEERING ON COURSE:** Wrangler Unlimited features a steering linkage and recirculating-ball steering gear. Its robust, cross-link geometry helps provide one of the most precise and stiffest possible linkage systems in a solid-axle platform.



It's the recognized standard for off-road performance. Every Jeep® 4x4 that bears a Road Rated® badge proves it's passed a series of gruelling off-road capability tests. Rest assured your Road Rated Jeep Wrangler Unlimited will work hard to safely navigate the most difficult challenges Mother Nature sets before you.

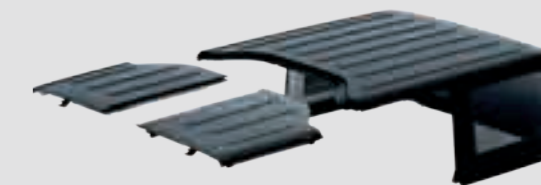


**SUNRIDER® SOFT TOP:** Let the sun shine in with Sunrider's easy-to-use fold-back sunroof feature and special three-ply fabric that's quiet and watertight. Standard. A premium Sunrider® Soft Top adds further durability and sound dampening, and includes an easy-to-wash dust blocker that helps keep your top in tip-top shape. Standard.

**FOLD-DOWN WINDSHIELD:<sup>4</sup>** This unique feature is useful during off-roading, helping the driver to keep a clear eye on the road ahead. Be sure to follow Owner's Manual instructions when you want to experience extreme fresh-air freedom by lowering the windshield.



WHEN IT COMES TO FRESH AIR,  
KEEP YOUR OPTIONS OPEN.



**FREEDOM TOP® HARDTOP:** Strong, secure and available in either Black or the exterior paint color of your Wrangler Unlimited. A three-piece modular design lets you bring in the sun as you see fit: remove<sup>4</sup> either front panel or both, or leave them in place and remove<sup>4</sup> the main rear portion. Standard.



**REMOVABLE<sup>4</sup> DOORS:** Full-framed doors with aluminum-forged hinges come standard.



**HARDTOP REMOVAL<sup>4</sup> TOOL KIT:**  
A complimentary tool kit is included with every hardtop Wrangler. It features four tools to help make door, roof removal<sup>4</sup> a snap.

WITHIN WRANGLER'S  
DISTINCTIVE CABIN, SEE  
THE WORLD FROM A VERY  
REVEALING POINT OF VIEW.

**KEEP IT CLEAN:** Grab the gear and dogs and drive towards the hills, with all the sand and dirt the great outdoors can offer. Wrangler Unlimited's weather-resistant surfaces and wash-out interior with drain plugs give you full permission to go out and have some fun in the mud.

**INNER GLOW:** Convenient interior courtesy lights illuminate the front footwells and cup holders, an available electrochromatic rearview mirror automatically darkens to help eliminate the blinding glare of headlamps.

**BE SEATED:** Heated front seats are a must-have feature when temps drop low, and you can have them standard with the leather seats on Wrangler Unlimited. Wrangler Unlimited's interior seat fabrics and comfort-designed seats brave all kinds of sitting down. With plenty of cushion and support, you've got more stamina to keep going.



**DETAILED PRIDE:** Jeep® Wrangler Unlimited is finely wrought with design details that are purposely placed and carefully crafted. Substantial bezels and knobs, robust stitching and a heritage-stamped grab handle are all proof that Wrangler Unlimited is ready to endure years of heavy use.



THE INNOVATION WITHIN  
IS ONE PART NICETY,  
ONE PART NECESSITY.



**ENTERTAINMENT VALUE:** Connect your own device to the standard audio input jack and let your playlist create the mood. The Uconnect 735N touchscreen treats you to a wealth of intuitive features like voice recognition,<sup>3</sup> navigation,<sup>3</sup> climate control and so much more.



**ALPINE® PREMIUM SOUND SYSTEM:** The standard Alpine® Premium Sound System creates a realistic sound stage by utilizing a high-powered eight-channel 552-watt amplifier, an eight-inch all-weather subwoofer, tweeters and 6.5-inch speakers. Alpine model is known for offering outstanding tonal balance and definition of music quality.

A VERSATILE CARRIER OF  
PEOPLE, PETS AND GEAR.

**STOW YOUR STUFF:** You'll appreciate the mesh net storage in all doors and a locking glove compartment for keeping smaller items secure and within reach.

**LOCKABLE CENTER CONSOLE:** You will get open-air freedom as well as a safe place to store your goods. An inner tray helps keep things organized within the large bin.

**REAR CARGO MAT AND STORAGE BIN:** A reversible cargo mat protects your carpet while a storage bin beneath the rear floor has a lift-out tray with convenient storage for bolts that are removed<sup>x</sup> from your doors and/or hardtop.

**REMOVABLE<sup>x</sup> FOLD-AND-TUMBLE REAR BENCH SEAT:** The Wrangler Unlimited models come standard with a split-folding rear seat.



Properly secure all cargo.

PEACE OF MIND  
TAKES YOU FAR.

**ADVANCED MULTISTAGE FRONT AIR BAGS:<sup>2</sup>**  
*Provide nearly instantaneous protection to occupants by matching air bag<sup>2</sup> output to crash severity. Standard.*

**SUPPLEMENTAL FRONT SEAT-MOUNTED SIDE AIR BAGS:<sup>2</sup>**  
*Deploying from the outboard side of each front seat, these air bags<sup>2</sup> enhance the protection of the driver and front-seat passenger in certain impacts. Each side air bag<sup>2</sup> has its own sensor to trigger the air bag<sup>2</sup> on the side where the crash occurs. Standard.*

**ELECTRONIC STABILITY CONTROL (ESC):<sup>5</sup>**  
*Designed to assist drivers in maintaining control of their vehicle at all times, utilizing hydraulic brake assist, traction control, Electronic Roll Mitigation (ERM) and Trailer Sway Damping<sup>5</sup> to constantly monitor driver input against the vehicle's actual course. If needed, ESC<sup>5</sup> automatically apply brakes and/or reduces engine torque, while ERM estimates the potential for wheel lift, reducing engine power and applying brakes if needed. TSC<sup>5</sup> detects sway unique to trailering and engages the brakes to slow the vehicle, increasing brake force to one side of the vehicle to help prevent the sway from the trailer. ESC<sup>5</sup> has three modes: Full-On, Partial-On (shuts off traction control) and Full-Off (ideal for off-road driving). Standard.*



**SENTRY KEY<sup>®</sup> ENGINE IMMOBILIZER:**  
*A unique and embedded key code matched only to your vehicle helps keep your Wrangler safely where it belongs. Standard.*

**HILL START ASSIST (HSA) AND HILL DESCENT CONTROL (HDC):**  
*Standard HSA works to prevent Wrangler Unlimited from rolling when starting on an uphill or downhill slope. It holds the vehicle stationary for two seconds after the driver's foot is removed from the brake pedal, allowing time to apply the power to the engine. The available HDC is packaged with the 5-speed automatic transmission and diligently works to help Wrangler Unlimited navigate steep declines at a steady and consistent speed.*

**ENERGY-ABSORBING FRONT-RAIL EXTENSIONS:**  
*Collapsible hydroformed front-rail tips offer low-speed protection and can be serviced after the collision of up to 13 kph. Standard.*

**ENHANCED ACCIDENT RESPONSE SYSTEM (EARS):**  
*This system makes it easier for emergency personnel to see and reach occupants in the event of an accident, turning on interior lighting, flashing hazard lamps and unlocking power doors after air bag<sup>2</sup> deployment. It also stops the flow of fuel to the engine. Standard.*

**HEATED POWER EXTERIOR MIRRORS:**  
*The exterior side view mirrors melt snow and ice off as you warm up your interior. The heat also helps to keep your mirrors icicle-free as you drive.*



HOW FAR WOULD YOU GO  
if you could go anywhere?

(1) Do not attempt water fording unless depth known to be less than 20 inches. Traversing water can cause damage that may not be covered by the new vehicle warranty. Always off-road responsibly in approved areas. (2) The Advanced Front Air Bags in this vehicle are certified to the new U.S. federal regulations for Advanced Air Bags. Children 12 years old and younger should always ride buckled up in a rear seat. Infants in rear-facing child restraints should never ride in the front seat of a vehicle with a passenger front air bag. All occupants should always wear their lap and shoulder belts properly. (3) Requires a mobile phone equipped with the Bluetooth Hands-Free Profile. Visit [UconnectPhone.com](http://UconnectPhone.com) for system and device compatibility (4) Be sure to follow all instructions in Owner's Manual for removal of top and doors, and lowering of windshield. Driving with doors off and windshield down is for off-road use only. (5) No system, no matter how sophisticated, can repeal the laws of physics or overcome careless driving actions. Performance is limited by available traction, which snow, ice and other conditions can affect. When the ESC warning lamp flashes, the driver needs to use less throttle and adapt speed and driving behaviour to prevailing road conditions. Always drive carefully, consistent with conditions. Always wear your seat belt.

©2015 FCA US LLC. All Rights Reserved. Jeep, the Jeep grille, Patriot, Freedom Drive II, Go Anywhere, Do Anything, ParkView, Trail Ready and Uconnect are registered trademarks of FCA US LLC.

Boston Acoustics is a registered trademark of Boston Acoustics, Inc. Bluetooth is a registered trademark of Bluetooth SIG, Inc. Goodyear is a registered trademark of The Goodyear Tire & Rubber Company. All rights reserved. iPad, iPhone, iPod and iTunes are registered trademarks of Apple Inc.

This brochure is a publication of FCA US LLC. All product illustrations and specifications are based upon current information at the time of publication approval. FCA US LLC reserves the right to make changes from time to time, without notice or obligation, in prices, specifications, colours and materials, and to change or discontinue models, which are considered necessary to the purpose of product improvement or for reasons of design and/or marketing.